

Our facility is one of five out of the state's 133 breast imaging centers to have been designated a Breast Imaging Center of Excellence by the American College of Radiology.

The National Accreditation Program for Breast Centers of the American College of Surgeons has recognized us as the first Accredited Center in the country.

Services we offer include:

Routine screenings and mammography

Referrals and education for maintaining breast health

Treatment of benign breast disease

Evaluation and supervision for women at high risk for breast cancer

Advanced diagnostic procedures, including MRI, ultrasound and biopsy

Complete specialized breast pathology services

Breast cancer treatment

For patients who are considered high risk, we also offer a number of special programs including a genetic counselor to answer your questions and meet your needs.

Putting our patients first, we have created a warm setting for breast care designed with soft touches to make each and every patient feel as relaxed and comfortable as possible.

Put yourself first and take control of your breast health. To schedule an appointment or for more information, please call 203.276.7763.

Stamford Hospital offers complete women's imaging services with all-digital mammography at two convenient locations.

Stamford Hospital Women's Breast Center—Tully Health Center

32 Strawberry Hill Court, Stamford, CT 06902

203.276.7763

From I-95 Northbound

Exit 8. Turn left at traffic light onto Atlantic Street and proceed 0.6 miles to Broad Street. Turn right onto Broad Street and take the third left onto Grove Street (which becomes Strawberry Hill Avenue) for 0.7 miles to the top of the hill. At light, take a left onto Strawberry Hill Court. Entrance is down the hill on the left.

From I-95 Southbound

Exit 8. Turn right onto Elm Street and continue straight to Grove Street (which becomes Strawberry Hill Avenue) for 0.7 miles to the top of the hill. Turn left onto Strawberry Hill Court. Entrance to Tully Health Center is on the left.

Parking

Patient parking is available adjacent to The Tully Health Center. Valet parking is also available at the main entrance.

Darien Imaging Center

6 Thorndal Circle, Darien, CT 06820

203.276.6116

From I-95 Northbound

Exit 11, Darien. Take a right at end of ramp onto Post Road. Take first right onto Thorndal Circle (Nielson's Florist is on the corner). Darien Imaging Center is in the first driveway on your left. Additional parking is located behind the building.

From I-95 Southbound

Exit 11, Darien. Take a left at end of ramp onto Post Road. Go under I-95 highway overpass. Take first right onto Thorndal Circle (Nielson's Florist is on the corner). Darien Imaging Center is in the first driveway on your left. Additional parking is located behind the building.



stamfordhospital.org

Put Yourself First

Take Control of your Breast Health



Affiliate Columbia University-College of Physicians & Surgeons
Member New York-Presbyterian Healthcare System
A Planetree Hospital

Stamford Hospital's Women's Breast Center offers compassionate and comprehensive breast care supported by leading-edge technology and clinical excellence.

Caren Greenstein, MD

Radiologist and Co-Director
Women's Breast Center



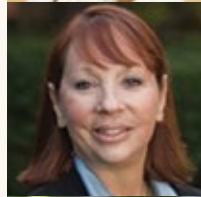
Donna Marie E. Manasseh, MD

Breast Surgeon and Co-Director
Women's Breast Center



Robbi Kempner, MD

Breast Surgeon
Women's Breast Center



Michele Speer, RN

Nurse Navigator
Women's Breast Center



As a Planetree hospital, we are committed to personalizing, humanizing and demystifying the healthcare experience for patients and their families. Our approach is holistic and encourages healing in all dimensions—mind, body and spirit.

Our facility is one of five out of the state's 133 breast imaging centers to have been designated a Breast Imaging Center of Excellence by the American College of Radiology.

The National Accreditation Program for Breast Centers of the American College of Surgeons has recognized us as the first Accredited Center in the country.

Services we offer include:

Routine screenings and mammography

Referrals and education for maintaining breast health

Treatment of benign breast disease

Evaluation and supervision for women at high risk for breast cancer

Advanced diagnostic procedures, including MRI, ultrasound and biopsy

Complete specialized breast pathology services

Breast cancer treatment

For patients who are considered high risk, we also offer a number of special programs including a genetic counselor to answer your questions and meet your needs.

Putting our patients first, we have created a warm setting for breast care designed with soft touches to make each and every patient feel as relaxed and comfortable as possible.

Put yourself first and take control of your breast health. To schedule an appointment or for more information, please call 203.276.7763.

Stamford Hospital's Women's Breast Center offers compassionate and comprehensive breast care supported by leading-edge technology and clinical excellence.

Caren Greenstein, MD

Radiologist and Co-Director
Women's Breast Center



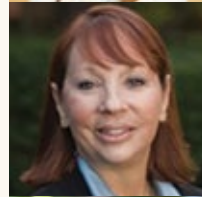
Donna Marie E. Manasseh, MD

Breast Surgeon and Co-Director
Women's Breast Center



Robbi Kempner, MD

Breast Surgeon
Women's Breast Center



Michele Speer, RN

Nurse Navigator
Women's Breast Center



As a Planetree hospital, we are committed to personalizing, humanizing and demystifying the healthcare experience for patients and their families. Our approach is holistic and encourages healing in all dimensions—mind, body and spirit.

Why choose Stamford Hospital's Women's Breast Center?

We have advanced technology to provide the most accurate screening and diagnostic breast imaging.

We consider our investment in technology an investment in the health of the women we serve.

We are proud to offer:

- Breast MRI with the highest resolution images available in Fairfield County
- Digital mammography that can image large-breasted women
- Advanced computer-assisted detection software
- Equipment and procedures for minimally invasive biopsies

Our multi-disciplinary team is dedicated to treating breast disease.

We offer the most comprehensive breast center comprised of an expert team that includes:

- Sub-specialized fellowship-trained female breast surgeons
- Reconstructive plastic surgeons
- Breast imaging fellowship-trained radiologists
- Expert breast pathologists
- Medical and radiation oncologists
- Nurse navigator
- Genetic counselor

This team meets at weekly cancer conferences to discuss the best possible individualized treatment for each patient.



Our services are convenient for patients in many ways.

It is our goal to make the experience as easy for our patients as possible by:

- Offering two locations—at the Tully Health Center and the Darien Imaging Center
- Providing weekend and evening hours to ensure patients can schedule appointments with ease
- Assigning one central number to call to schedule mammogram appointments, regardless of which facility is preferred
- Pre-registering patients the night before their exam to make check-in as quick and easy as possible
- Bringing breast screenings directly to your corporation, church or community organization and providing on-site services through our mobile wellness program
- Making our mobile wellness program available to uninsured and underinsured women

We provide personalized care—if and when you need it.

In the event a problem is identified, our patients know they will:

- Have immediate follow up testing
- See a surgeon within 24–36 hours
- Have the support of a dedicated nurse navigator to guide them through the process from diagnosis through treatment and beyond.

Stamford Hospital offers complete women's imaging services with all-digital mammography at two convenient locations.

Stamford Hospital Women's Breast Center—Tully Health Center

32 Strawberry Hill Court, Stamford, CT 06902

203.276.7763

From I-95 Northbound

Exit 8. Turn left at traffic light onto Atlantic Street and proceed 0.6 miles to Broad Street. Turn right onto Broad Street and take the third left onto Grove Street (which becomes Strawberry Hill Avenue) for 0.7 miles to the top of the hill. At light, take a left onto Strawberry Hill Court. Entrance is down the hill on the left.

From I-95 Southbound

Exit 8. Turn right onto Elm Street and continue straight to Grove Street (which becomes Strawberry Hill Avenue) for 0.7 miles to the top of the hill. Turn left onto Strawberry Hill Court. Entrance to Tully Health Center is on the left.

Parking

Patient parking is available adjacent to The Tully Health Center. Valet parking is also available at the main entrance.

Darien Imaging Center

6 Thorndal Circle, Darien, CT 06820

203.276.6116

From I-95 Northbound

Exit 11, Darien. Take a right at end of ramp onto Post Road. Take first right onto Thorndal Circle (Nielson's Florist is on the corner). Darien Imaging Center is in the first driveway on your left. Additional parking is located behind the building.

From I-95 Southbound

Exit 11, Darien. Take a left at end of ramp onto Post Road. Go under I-95 highway overpass. Take first right onto Thorndal Circle (Nielson's Florist is on the corner). Darien Imaging Center is in the first driveway on your left. Additional parking is located behind the building.