

inData  
**TrialDirector® 5**  
Trial Presentation Software

# POWERPOINT PLUGIN



**inData®**  
DISCOVER.  
MANAGE.  
PRESENT.  
WIN.

# Contacting inData

## **inData Corporation**

1325 N. Fiesta Blvd., Suite 4  
Gilbert, AZ 85233 USA  
www.indatacorp.com

Phone: 480-497-8595  
Toll Free: 877-inData9 (877-463-2829)  
Fax: 480-497-1833

**Sales: 800-828-8292**

**Technical Support: 480-497-0066**

## Useful E-Mail Addresses

<b>Litigation Services</b>	litigationsupport@indatacorp.com
<b>Sales</b>	sales@indatacorp.com
<b>Technical Support</b>	support@indatacorp.com
<b>Training</b>	training@indatacorp.com
<b>Trial Consulting</b>	techconsulting@indatacorp.com

## Technical Support

Technical Support is available with every inData software product, 24 hours a day, 7 days a week on the inData Web site at [www.indatacorp.com/support/](http://www.indatacorp.com/support/). Visit the Tech Notes, Tips & FAQ's page for helpful "How to" hints on all inData products.

Phone: 480-497-0066  
Fax: 480-497-1833  
E-Mail: [support@indatacorp.com](mailto:support@indatacorp.com)

**Standard Technical Support:** This service provides telephone, fax, on-line, or e-mail support to clients Monday through Friday, 9:00 AM - 8:00 PM Eastern Standard Time - Excluding Holidays.

**On-line Technical Support Request Form:** Click the link on the Support Web page and fill out the request form.

**Fax Technical Support:** Fax your question to 480-497-1833. Please be as detailed as possible and include your product serial number.

## Copyright Acknowledgements

Windows® is a registered trademark of Microsoft Corporation.

Access is a trademark of Microsoft Corporation.

Internet Explorer is a trademark of Microsoft Corporation.

PowerPoint® is a registered trademark of Microsoft Corporation.

DepositionDirector® is a registered trademark of inData Corporation.

DocumentDirector® is a registered trademark of inData Corporation.

TrialDirector® is a registered trademark of inData Corporation.

All other product names and logos are trade and/or service marks of their respective companies and are hereby acknowledged.

Information in this document is subject to change without notice. This documentation may not be copied, photocopied, reproduced, translated, or reduced to any electronic medium or machine-readable form without the written consent of inData Corporation

©2006 by inData Corporation. All rights reserved.

Printed in the United States

Documentation written and compiled by inData Technical Publications

inData Corporation.

1325 North Fiesta Boulevard

Suite 4

Gilbert, Arizona 85233

Visit inData on-line: <http://www.indatacorp.com>

## Table of Contents

TrialDirector PowerPoint Plug-in .....	1
Configuring PowerPoint.....	1
Incorporating TrialDirector into PowerPoint.....	2

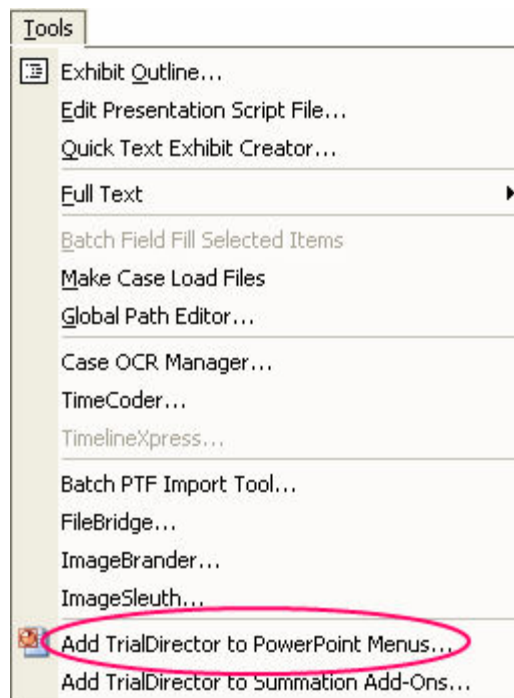
# TrialDirector PowerPoint Plug-In

**PowerPoint Plug-In** - TrialDirector gives you the ability to embed a live TrialDirector session in PowerPoint presentations. This will make PowerPoint a more flexible and stronger presentation tool. You can have multiple slides with your important points, and then have portions of those slides with the TrialDirector control embedded.

## Configuring PowerPoint

The first step in using TrialDirector within PowerPoint is to configure the connection between the two applications.

1. Open TrialDirector. (PowerPoint should be closed.)
2. From the Tools menu, select the Add TrialDirector to PowerPoint Menus... command.

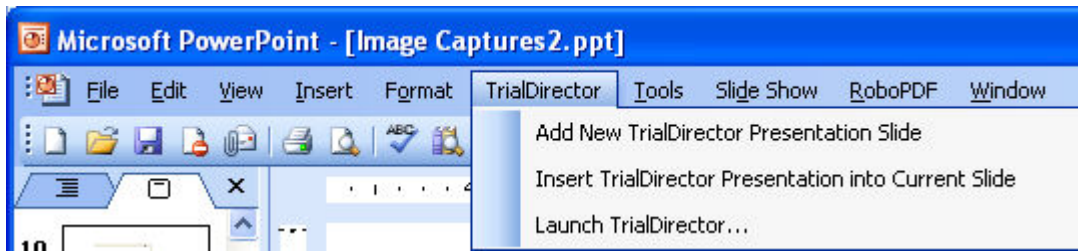


3. When the plug-in has been installed, the following message will display. Click OK to close the message.



4. Open PowerPoint. A TrialDirector menu will appear in the PowerPoint menu bar as shown below.

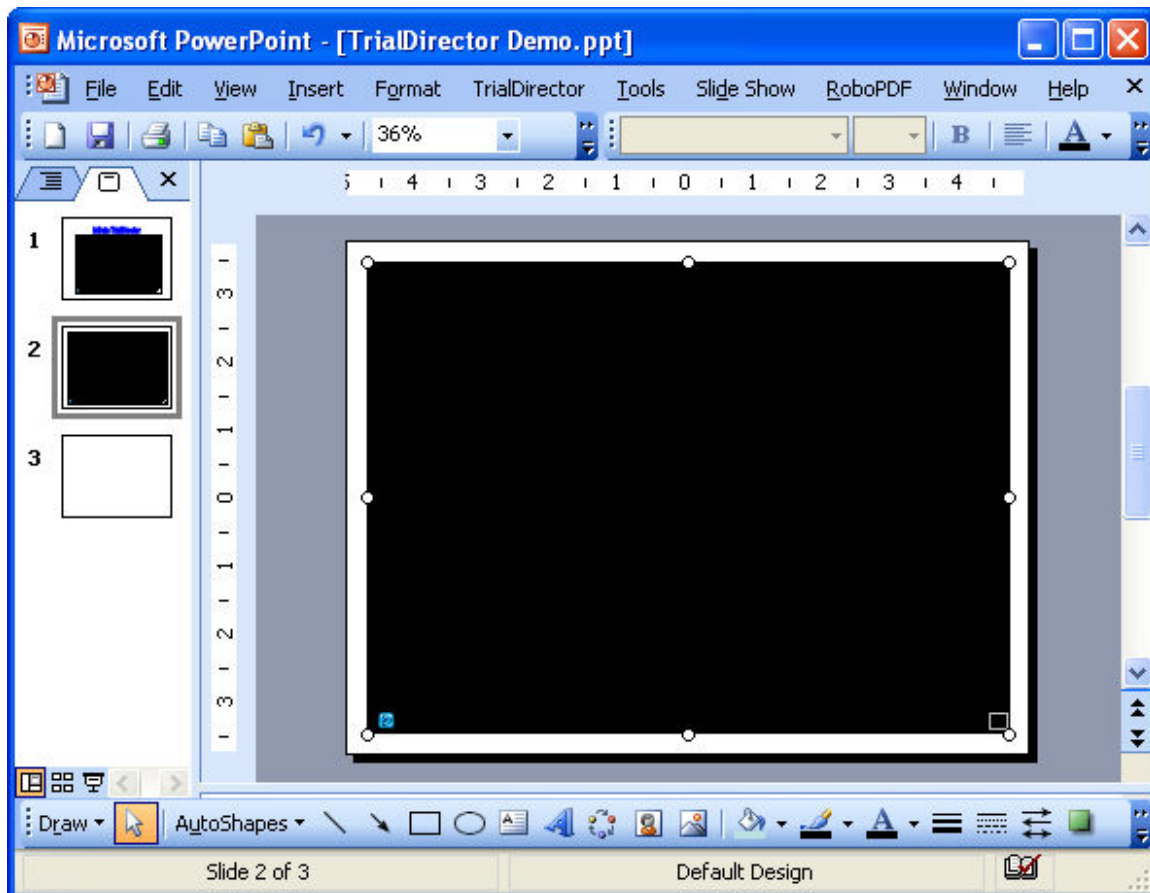
## PowerPoint Plug-In



## Incorporating TrialDirector into PowerPoint

To create a PowerPoint presentation with TrialDirector embedded, follow the steps listed below.

1. Launch PowerPoint
2. Open the desired Presentation or create a New Presentation.
3. Select the slide that will contain the TrialDirector window. From the TrialDirector menu in PowerPoint, select Insert TrialDirector Presentation into Current Slide.
4. A TrialDirector Presentation window will appear in your desired slide. You can leave the TrialDirector window at it's full size or resize it to use only a portion of the PowerPoint slide. You can place TrialDirector windows on as many slides as desired.



5. Save your Presentation with the TrialDirector window(s) placed as desired.
6. Run the PowerPoint Slide Show using PowerPoint commands.

7. When you have reached a slide with TrialDirector in it, you can load exhibits into the slide with all of TrialDirector's functionality. You do not have to separately launch TrialDirector, since the active TrialDirector Presentation window can make any necessary calls to TrialDirector data.
-