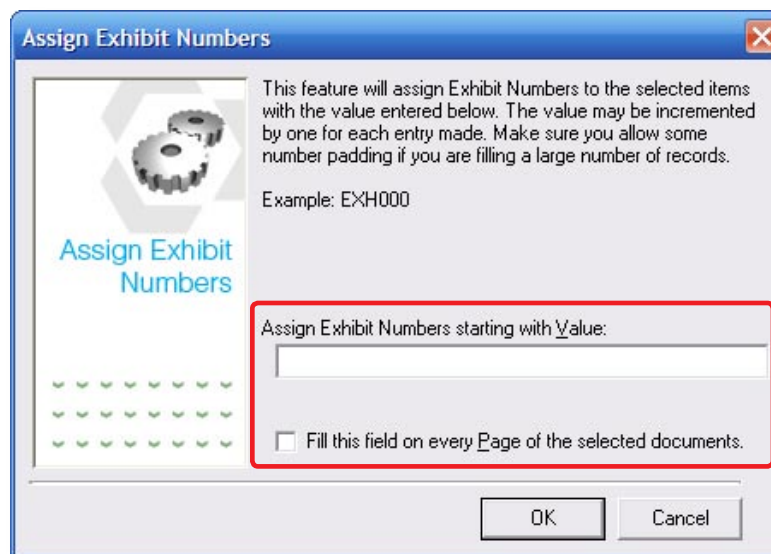
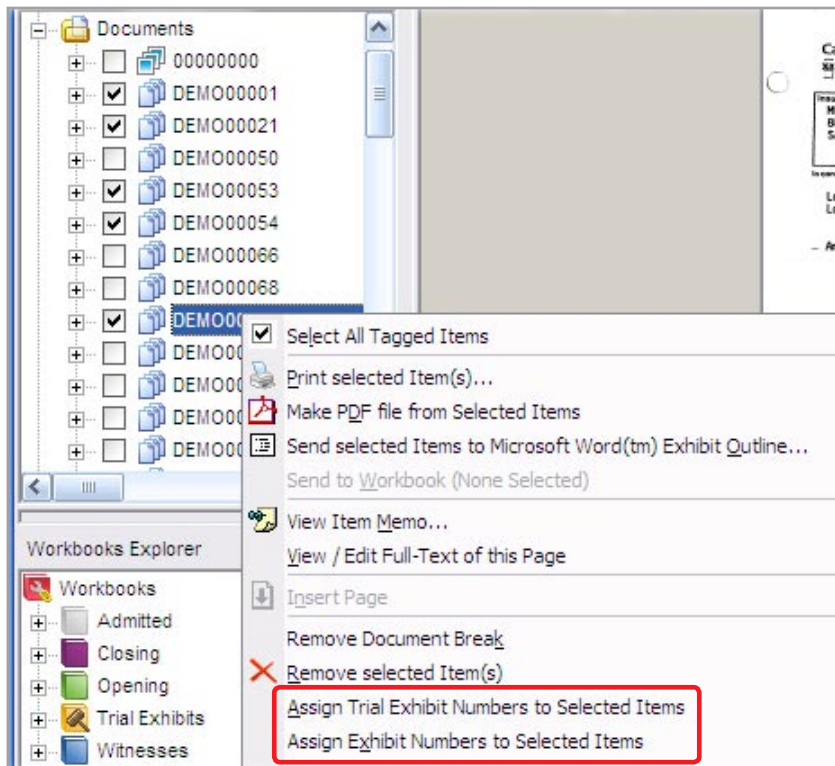


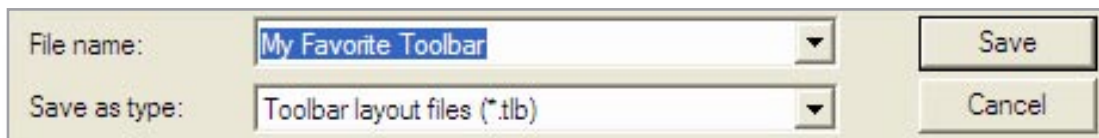
Automatic Exhibit Numbers

Quickly assign an exhibit number with a simple right click of the mouse. The easy-to-use wizard walks you through assigning exhibit numbers at either a document or page level.



Customizable Presentation Toolbar

Organize the Presentation Toolbar to work the way you do. In addition to choosing which buttons to view, you can now rearrange the order of the buttons and save your own customized toolbar. Simply press the ALT key and drag-and-drop the buttons to your new desired location.



Mac® Support

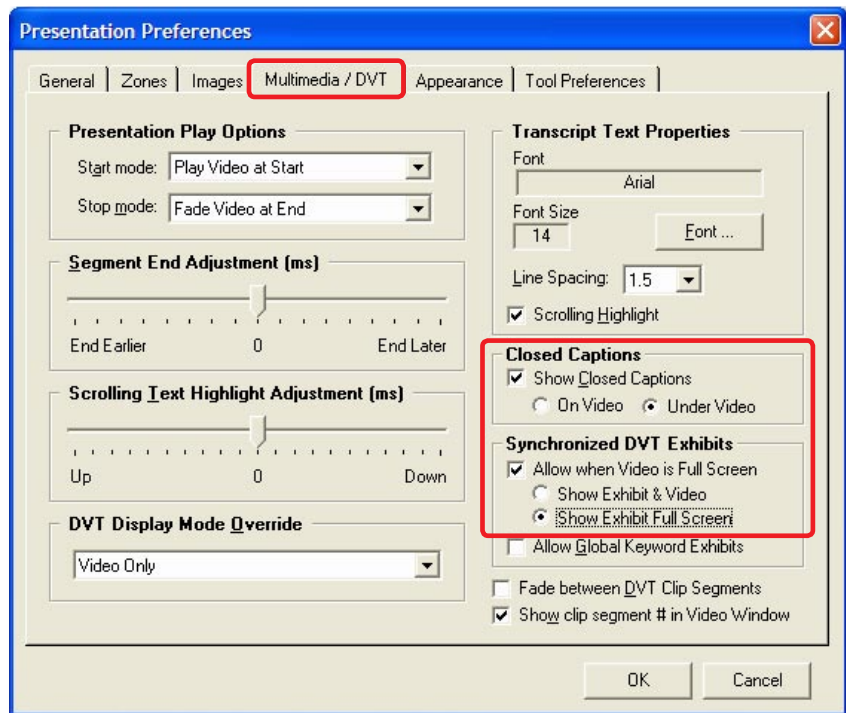
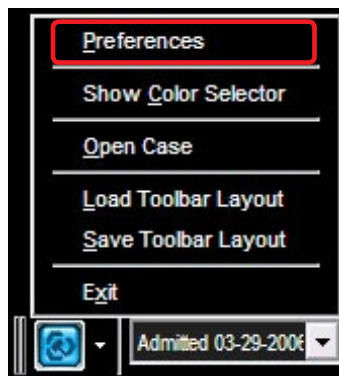
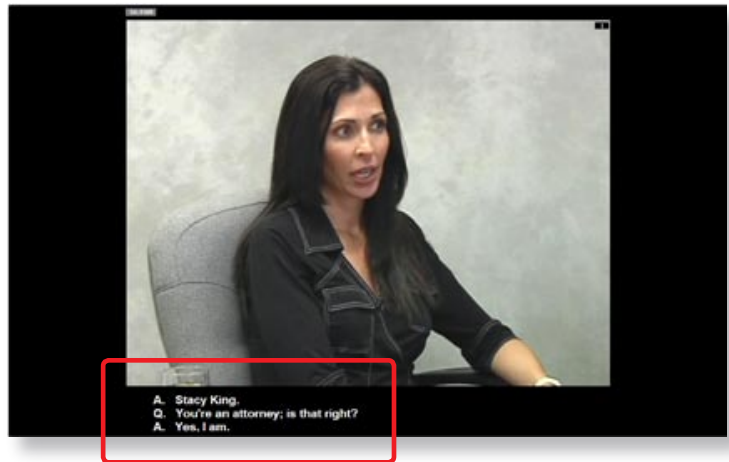
Good news for all of the Mac® lovers out there: TrialDirector v5.2 has been tested and verified to work on Apple® computers running the Microsoft XP and Windows Vista® operating systems in the Boot Camp®, Parallels™, and VMware Fusion™ environments.

Full Screen Video/Exhibit Option

This new option enables you to display an exhibit full-screen when it is referenced in a video deposition. The program will automatically fade back to the video testimony after the exhibit has been displayed in Presentation mode, or you can pause the video to allow extra time for the jury to read the exhibit.

Closed Caption Positioning

With TrialDirector v5.2, you can decide where to display the associated transcript text when presenting a video deposition. Display closed captioning underneath the deponent's video or on top of the video to save screen space.



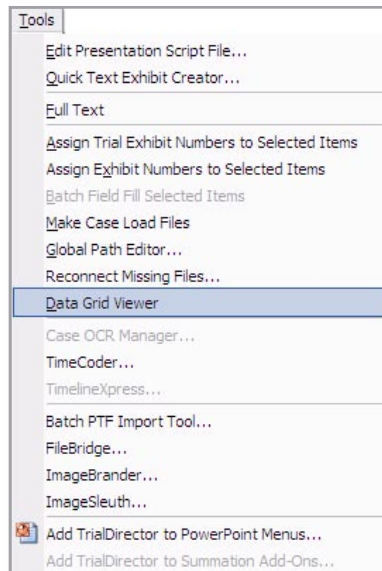
New preferences for closed captions and synchronized exhibits.

Play Up to Four Videos

Need to show surveillance video from different angles or display a video deposition along side other recorded scenes? Take advantage of TrialDirector's ability to display up to four videos simultaneously in Presentation mode.

Grid View

To sort your case data based on specific fields or to quickly edit item information, take advantage of the new Grid View in TrialDirector. The Grid offers a new way to view and manage your case documents, in addition to Case Explorer. Fans of the older TrialDirector v4.5 interface will love this new feature.



Page ID	Pg	Exhibit No.	Trial Exhibit No.	Description	Volume	Path	Filename	Created Date	Modified Date	Recr
SAMPLE	1			SAMPLE SPREADS		(C:\Documents and Settings\mille	sample.xls	10/10/2006 2:48:31 PM	10/10/2006 2:48:31 PM	
DEM000053	1	PT-0034		July 18, 1994 letter to Craig Gnanell from P. David Emery		(C:\Documents and Settings\All	demo00053.tif	3/31/2004 2:58:58 PM	5/12/2006 3:03:58 PM	
DEM000050	1	PT-0027		May 11, 1993 letter to Clare Macdonald from P. David Emery		(C:\Documents and Settings\All	demo00050.tif	3/31/2004 2:58:58 PM	5/12/2006 3:05:04 PM	
LGCO3	1	PT-0026		Equipment accident injury animation		(C:\Documents and Settings\All	lgt03.mpg	3/31/2004 2:58:58 PM	5/13/2006 7:17:05 PM	
DEM000129	1	PT-0021		Defendant's Responses to First Set of Form Interrogatories		(C:\Documents and Settings\All	demo00129.tif	3/31/2004 2:58:58 PM	5/12/2006 3:18:59 PM	
LGCO2	1	PT-0020		Highway accident reconstruction animation		(C:\Documents and Settings\All	lgt02.mpg	3/31/2004 2:58:58 PM	5/13/2006 6:57:33 PM	
DEM000068	1	PT-0019		Claim System Detail Screen		(C:\Documents and Settings\All	demo00068.tif	3/31/2004 2:58:58 PM	5/12/2006 3:03:42 PM	
DEM000145	1	PT-0018		June 23, 1999 letter to DeLoreto, Samocka and Heman from R.		(C:\Documents and Settings\All	demo00145.tif	3/31/2004 2:58:58 PM	5/12/2006 3:03:18 PM	
PCE MAP-G501	1	16	PT-0016	Snapshot Wednesday, Mar. 31, 2004 04:40 PM		(C:\Documents and Settings\All	pce map-gt01.png	3/31/2004 4:40:11 PM	3/30/2006 9:59:06 AM	
PCE MAP	1	15	PT-0015	Graphic - Concentration of PCE in Groundwater		(C:\Documents and Settings\All	pce map.tif	3/31/2004 2:58:58 PM	3/30/2006 9:58:58 AM	
PCE CROSS SECTION	1	14	PT-0014	Graphic - approx. PCE concentration ranges		(C:\Documents and Settings\All	pce cross section.jpg	3/31/2004 2:58:58 PM	3/30/2006 9:58:50 AM	
OVERHEAD	1	13	PT-0013	Overhead photo of property		(C:\Documents and Settings\All	overhead.jpg	3/31/2004 2:58:58 PM	3/30/2006 9:58:41 AM	
OPENING STATEMENT	1	12	PT-0012	Opening Statement Presentation		(C:\Documents and Settings\All	opening statement.pp	3/31/2004 2:58:58 PM	3/30/2006 9:58:30 AM	
GW ELEVATION	1	11	PT-0011	Groundwater Elevation Contour Map		(C:\Documents and Settings\All	gw elevation.tif	3/31/2004 2:58:58 PM	3/30/2006 10:50:25 AM	
EB-00516-G503	1	10	PT-0010	Snapshot Wednesday, Mar. 31, 2004 04:47 PM		(C:\Documents and Settings\All	eb-00516-gt03.png	3/31/2004 4:47:14 PM	3/30/2006 9:58:13 AM	
DEM0000294	1	9	PT-0009	September 1, 1992 report letter from Dames & Moore to CRW/QCB		(C:\Documents and Settings\All	demo00294.tif	3/31/2004 2:58:58 PM	3/30/2006 9:58:05 AM	
DEM000173-G501	1	8	PT-0008	Snapshot Wednesday, Mar. 31, 2004 04:21 PM		(C:\Documents and Settings\All	demo00173-gt01.png	3/31/2004 4:21:53 PM	3/30/2006 9:57:57 AM	
DEM000075	1	7	PT-0007	CC Policies		(C:\Documents and Settings\All	demo00075.tif	3/31/2004 2:58:58 PM	5/12/2006 3:00:30 PM	
DEM000066	1	6	PT-0006	Multi-layer Build		(C:\Documents and Settings\All	demo00066.tif	3/31/2004 2:58:58 PM	5/12/2006 2:59:17 PM	
DEM000054-G501	1	5	PT-0005	Snapshot Thursday, Apr. 1, 2004 08:54 AM		(C:\Documents and Settings\All	demo00054-gt01.png	4/1/2004 8:54:40 AM	3/30/2006 9:57:31 AM	
DEM000054	1	4	PT-0004	Multi-layer Build		(C:\Documents and Settings\All	demo00054.tif	3/31/2004 2:58:58 PM	5/12/2006 2:58:41 PM	
DEM000050-G503	1	3	PT-0003	Snapshot Wednesday, Mar. 31, 2004 04:47 PM		(C:\Documents and Settings\All	demo00050-gt03.png	3/31/2004 4:47:14 PM	3/30/2006 9:57:13 AM	
DEM000050-01-G501	1	2	PT-0002	Snapshot Wednesday, Mar. 31, 2004 04:44 PM		(C:\Documents and Settings\All	demo00050-01-gt01.png	3/31/2004 4:44:25 PM	3/30/2006 9:57:05 AM	
DEM000050-G501	1	1	PT-0001	Snapshot Wednesday, Mar. 31, 2004 03:59 PM		(C:\Documents and Settings\All	demo00050-gt01.png	3/31/2004 3:59:00 PM	3/30/2006 9:56:57 AM	
STEP PROCESS	1					(C:\Documents and Settings\All	7_step process.swf	6/1/2004 10:09:04 AM	6/1/2004 10:09:04 AM	
SHOULDER SURGERY	1					(C:\Documents and Settings\All	8_shoulder surgery.swf	6/1/2004 10:09:04 AM	6/1/2004 10:09:04 AM	
SAMPLE FLOW CHART	1					(C:\Documents and Settings\All	1_hierarchical flow cha	6/1/2004 10:09:04 AM	6/1/2004 10:56:38 AM	
PPT CLOSING	1			Closing Argument Presentation		(C:\Documents and Settings\All	ppt closing.ppt	3/31/2004 2:58:58 PM	3/31/2004 2:58:58 PM	
SUPER OCEAN WATCH	1			3D Model of Bottling Super Ocean Watch		(C:\Documents and Settings\All	ole-cul3d.co	3/31/2004 2:58:58 PM	5/13/2006 7:24:19 PM	
ITEMIZED CHART	1			Flash Animation		(C:\Documents and Settings\All	18_itemized chart.swf	6/1/2004 10:09:04 AM	5/13/2006 7:21:29 PM	
INTERSECTION DIAGR.	1					(C:\Documents and Settings\All	24_intersection diag	6/1/2004 10:09:04 AM	6/1/2004 10:09:04 AM	
VIDCLIP05-001	2			Clip # 1		(C:\Documents and Settings\All	vidclip05.mpg	3/31/2004 2:58:58 PM	3/31/2004 2:58:58 PM	
VIDCLIP02	1			Video Clip #2, water flow on property		(C:\Documents and Settings\All	vidclip02.mpg	3/31/2004 2:58:58 PM	3/31/2004 2:58:58 PM	
VIDCLIP01-001	2			Clip # 1		(C:\Documents and Settings\All	vidclip01.mpg	3/31/2004 2:58:58 PM	3/31/2004 2:58:58 PM	
VIDCLIP01-G501	1			Snapshot Wednesday, Mar. 31, 2004 04:40 PM		(C:\Documents and Settings\All	vidclip01-gt01.png	3/31/2004 4:40:12 PM	4/1/2004 9:10:59 AM	

Automatic Synchronization of Coded Data

Now when you edit certain case data (such as the Trial Exhibit No.) from either the Case Library or the Coding tabs, the changes are made in both locations.

Check for Updates

Ensuring you have the latest updates to TrialDirector is even easier. Simply select Check for Updates from the Help menu and the program automatically checks for updates. If an update is available, the program walks you through simple installation.

