

inData® Corporation, the developer of leading trial presentation software TrialDirector®, proudly introduces a new program called inData inVentry™. inVentry can help you quickly determine the size of an eDiscovery project; simply navigate to your eDiscovery storage location, run inVentry, and the software quickly generates a report that identifies:

- › file extensions
- › file sizes
- › number of files located on the media

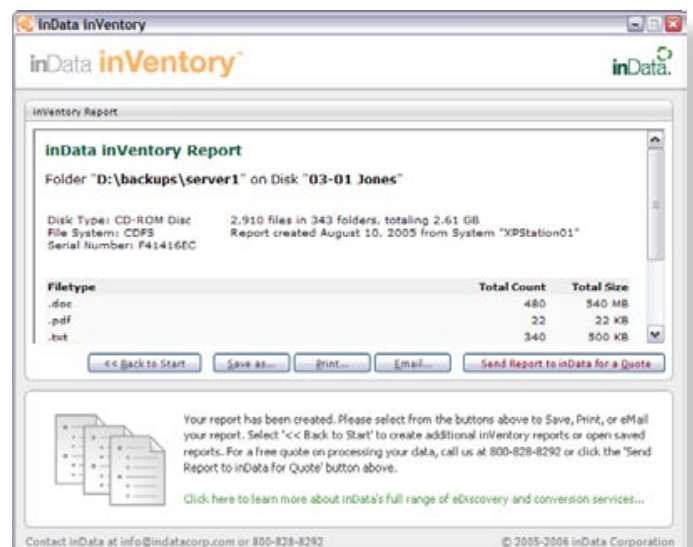
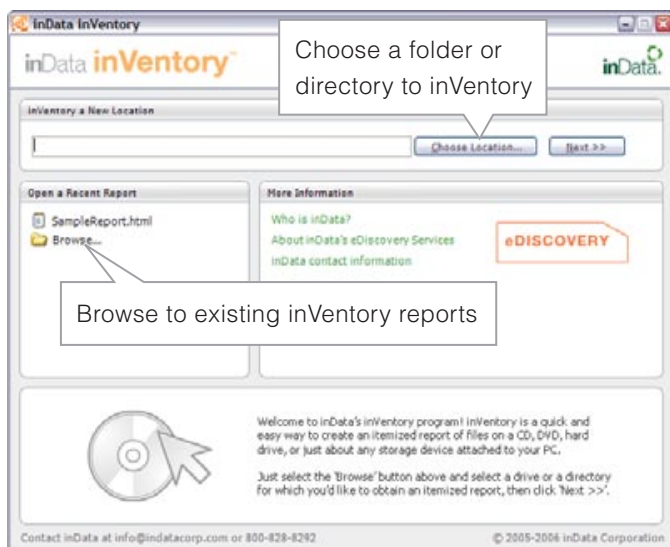
inVentry will report the content of a CD-ROM, hard drive, and various media storage devices, without changing metadata. You can save, print, and even eMail the itemized report to obtain an estimate on eDiscovery processing services. inVentry gives you the knowledge to make timely and cost-conscious decisions for your client.

Download inVentry Software at No Cost!

inVentry will be available at no cost for its initial release, allowing you to easily experience and evaluate the advantage inVentry offers. To download inVentry software, visit our website at www.indatacorp.com.

inVentry Home Page – Begin inVentrying your Data!

inVentry Report Page - Save, Print, or eMail the Report!



EDD IS SIMPLE (FOR US)

And we can make it simple for you too.

inData eDiscovery services include:

Data Analysis

Using advanced technology we process your case data, identifying and eliminating costly duplications. Your data, including valuable metadata, is captured into a fully searchable database.

We give you the tools to perform keyword, contextual and concept searches. View search results based on relevancy criteria. inData's intelligent review tools will even make content specific suggestions.

Data Production

Once you've pinpointed the responsive data, inData produces it in the formats you require:

- › TIFF images
- › Native files
- › Metadata
- › Full-text

Your data is delivered for import into the software of your choice, including:

- › TrialDirector®
- › CaseVault®
- › LextraNet®
- › IPRO™
- › Concordance®
- › Summation®
- › iConect™
- › DocuLex™
- › Opticon™
- › DocuMatrix™

