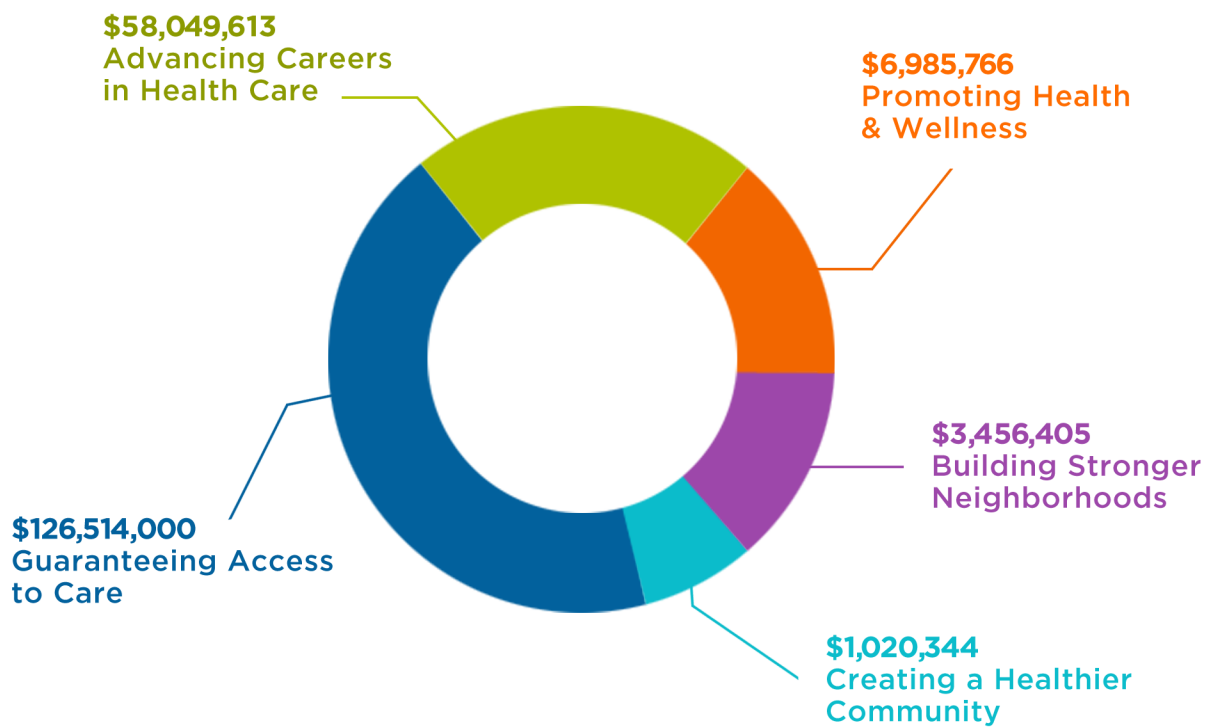


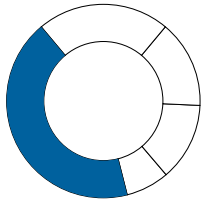
\$196,026,128

in financial and in-kind contributions
through five wide-ranging programs



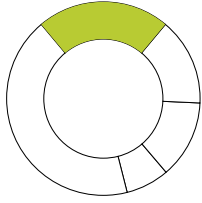
Every year, as part of our vital mission to promote health and wellness throughout the Greater New Haven region, Yale-New Haven Hospital (YNHH) sponsors, develops and participates in a wide variety of community-based programs and services. During 2010, YNHH managed \$196 million in financial and in-kind contributions through five wide-ranging programs - Guaranteeing Access to Care; Promoting Health & Wellness; Advancing Careers in Health Care; Creating Healthier Communities; and Building Stronger Neighborhoods. We are proud to summarize those efforts in the annual Community Benefits Report.

The core of our healthcare services is the hospital itself. For nearly 180 years, YNHH has not only served the medical needs of the community but also pioneered advances in medicine and trained thousands of doctors, nurses and other healthcare professionals through our affiliation with Yale Schools of Medicine and Nursing. Today, as the flagship facility of Yale New Haven Health System—which also includes Bridgeport Hospital and Greenwich Hospital—YNHH is a world-renowned institution whose more than 8,000 employees are dedicated to the healthcare needs of our community.



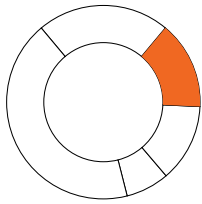
\$126,514,000 **Guaranteeing Access to Care**

YNHH provided free or discounted healthcare services to nearly 9,700 eligible people at a loss of \$20.8 million, plus under-reimbursed services for 177,500 Medicaid beneficiaries at a loss of \$105.7 million.



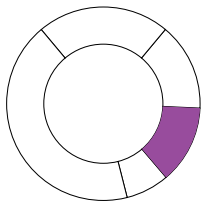
\$58,049,613 **Advancing Careers in Health Care**

YNHH provided more than \$58 million to a variety of healthcare education programs that train individuals to become medical professionals, from physicians and nurses to pharmacists and dieticians.



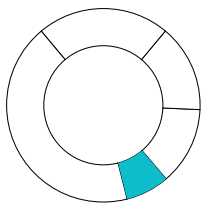
\$6,985,766 **Promoting Health & Wellness**

YNHH provided \$7 million to local health education programs, support groups, health fairs and various community organizations that help make New Haven a healthier place to live and work.



\$3,456,405 **Building Stronger Neighborhoods**

YNHH provided \$3.5 million in financial and in-kind donations to support affordable housing programs, child care, job training, economic development and other essential services.



\$1,020,344 **Creating a Healthier Community**

YNHH provided \$1 million in funds and in-kind services to dozens of local not-for-profit organizations unaffiliated with the hospital.

Yale-New Haven Hospital Is...

A 966-bed tertiary referral center that includes Smilow Cancer Hospital at Yale-New Haven, Yale-New Haven Children's Hospital and Yale-New Haven Psychiatric Hospital, with more than 591,000 outpatient and emergency visits and 56,620 discharges in 2010.

A provider of comprehensive, multidisciplinary, family-focused care in more than 100 medical specialties, administered with the skill and expertise of nearly 3,600 university and community physicians and advanced practitioners, including more than 600 resident physicians.

The primary teaching hospital for Yale School of Medicine.

Ranked among the top hospitals in the United States, according to *U.S. News & World Report's* annual "America's Best Hospital's" survey, which last year listed more than a dozen Yale-New Haven adult specialties and three pediatric subspecialties among the best in the nation.

Connecticut's busiest healthcare provider and New Haven's second-largest employer.